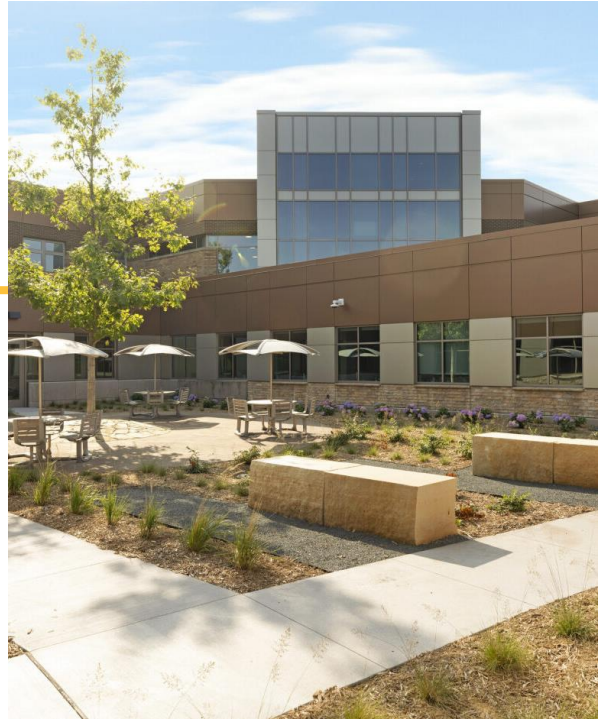




# Large Group Practice: Transforming Psychiatric Care with PrairieCare

Kyle Cedermark, MD  
Chief Psychotherapy Officer  
Medical Director for PrairieCare Residential Services



1



## Our Mission, Vision and Values

### Mission

*To provide each individual patient the psychiatric care they truly need*

### Vision

*Transforming psychiatric healthcare*

### Values

*Integrity, Compassion, Determination*

### GUIDING PRINCIPLE

We act with integrity, compassion, and determination to establish authentic connections and instill hope in our patients, team members, and community.

### INTEGRITY

We are compelled to do our best work every day, providing a high standard of ethical care and inclusive culture.

### COMPASSION

We are driven by our patient stories, committed to understanding, and focused on caring for individual needs.

### DETERMINATION

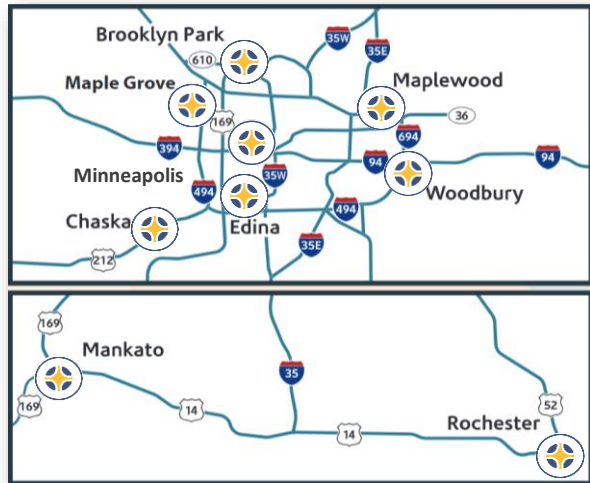
We are determined to create positive change, overcome obstacles, face adversity, and never give up in providing patients the healing they deserve.



2

## About PrairieCare

- Founded by Child and Adolescent Psychiatrist and Psychoanalyst
- 10 locations state-wide
- Inpatient Hospitalization Program for Youth and Young Adult (up to age 28)
- Residential Treatment Program for Youth
- Partial Hospitalization Program (PHP) for All ages
  - New "Center For Families" Uptown location.
- Intensive Outpatient Program (IOP) for All Ages
  - Including Perinatal IOP in Brooklyn Park
- Outpatient Clinic
  - TMS in Edina and Woodbury



3

3

## PrairieCare History and Timeline

Year	Milestone
2005	Minnetonka Clinic & PHP
2006	Woodbury Clinic & PHP
2007	Moved Minnetonka services to Edina
2009	Founded PrairieCare and PCMG
2011	Opened Maple Grove Hospital & PHP
2012	Expanded Edina & Woodbury
2013	Opened After-School IOP's
2014	Opened Chaska, Rochester, PAL
2015	Opened PrairieCare Institute & 50 Bed Hospital
2016	Opened PrairieCare Maplewood & PrairieCare Fund
2017	Opened MOB & Mankato Added TMS & Beds
2019	Expanded Services Rochester & Mankato
2023	Bed Expansion

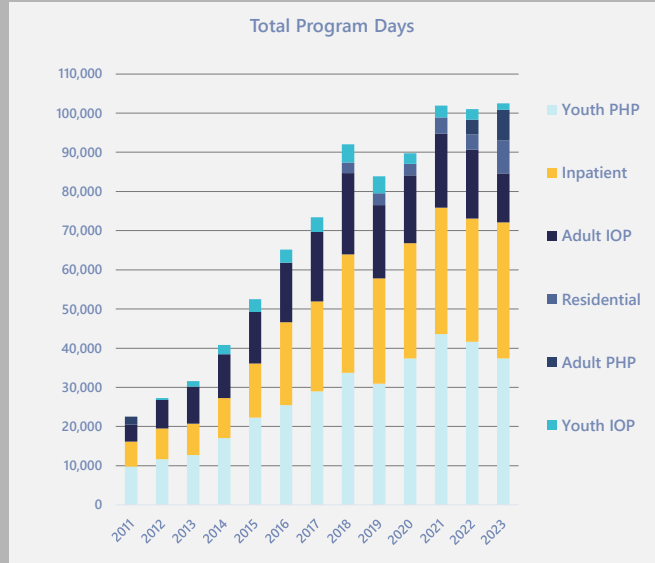


4



## PrairieCare's Growth:

- 35% growth annually for first decade
- Provide care to more than 20,000 annually
- Largest psychiatric medical group in the Midwest
- Newport and PrairieCare are the nation's largest provider of youth and young adult mental health services



5

## PrairieCare Medical Staff

- 28 Psychiatrists
  - 23 with Child and Adolescent training
- 20 Advance Practice Nurses
- 3 Physician Assistants



6



6

## Funding:

- Nearly 100% of Funding Comes from Services Provided
- Funding streams
  - In network with all major Payers
  - Single case agreements
  - Advocacy for strong rates (Todd Op-Ed)
  - Hennepin County contract for RTC
- EMTALA- Bound Hospital
  - 50-55% Government payer- Medicaid, Medicare, PMAP
- Outpatient Programs
  - 20-33% Government payer- Medicaid, Medicare, PMAP
- Clinical and Educational Consulting
  - PC Physicians consult in a variety of educational and treatment settings throughout the State.

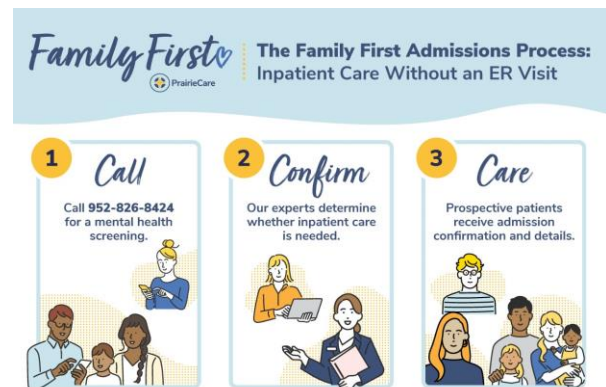


7

7

## A Nimble and Flexible Approach

- Partnership with Hennepin County for Residential Treatment
- Collaboratively launched Childrens MN's 22 bed unit
- Partnership with Red Lake Nation, Mino B. Clinic
  - Indigenous Mental Health Toolkit
  - American Indian focused cultural adaptation of tFCBT
- YA inpatient, YA Inpatient expansion and flex units.
  - Rapid shifts to meet demand
- Family First Admissions Process
  - Bypass ED for inpt admissions
  - Accessible in Spanish, Hmong, Somali
- Mobile Assessments
  - 30 mile radius of Brooklyn Park



8

8

## Challenges: Hospital-based vs. Community-based

- Staffing
- Seasonality
- Relationships with Referral Partners
- Business Environment
- Size vs. Flexibility Constraints



9

9

Thank you.

10